



# Technical Packet



**The Bijou Theatre Center serves to enhance Knoxville's cultural development by creating a gathering place for all, developing a platform for performances of all kinds, and preserving a touchstone of Knoxville's long, storied history – while building a vibrant and diverse future for the arts in our community.**

**We are so excited and proud to have you with us as part of our mission. Bijou staff are all determined to ensure that your visit with us is filled with positivity, professionalism, and fun.**

**803 South Gay Street  
Knoxville, TN. 37902  
Office (865) 522-0832  
[www.knoxbijou.org](http://www.knoxbijou.org)**

**[MAP AND DIRECTIONS TO THE BIJOU THEATRE](#)**



Courtney Bergmeier  
(Executive Director)  
865-522-0832 ext. 201  
Courtney@KnoxBijou.org



Nathan McGhee  
(General Manager)  
865-522-0832 ext. 207  
Nathan@KnoxBijou.org



Serenity Shalander  
(Technical Director)  
865-522-0832 ext. 203  
Serenity@KnoxBijou.org



Carolina Moralejo Belk  
(Event Manager)  
865-522-0832 ext. 209  
Carolina@KnoxBijou.org



William Tugwell  
(Assist. Tech. Dir.)  
865-522-0832 ext. 203  
William@KnoxBijou.org



Rachel Robinson  
(Box Office Manager)  
865-684-1200 ext. 148  
Rachel@KnoxBijou.org



Heather Seiber  
(Business Manager)  
865-522-0832 ext. 205  
Heather@KnoxBijou.org



Marie Kolzow  
(Ticketing Ops. Manager)  
865-522-0832 ext. 208  
Marie@KnoxBijou.org

# THEATRE SPECS

Proscenium Width = 35ft.  
Proscenium Height = 27ft.  
Depth upstage wall to Fire Curtain = 31'6"  
Fire Curtain to DS Pit edge = 8'7"  
Total width of the stage = 69ft.  
Grid Height = 57'ft.  
Fly Gallery Height = 28'ft.  
Wing space Right and Left = 17'ft.

## **Power:**

No turnarounds are provided.  
One (1) LEX 100 Amp 3 Phase Pagoda to (15) Duplex Receptacles.

## **Stage Left**

One (1) 200 Amp 3 Phase Distro with cam locks.  
One (1) 200 Amp 3 Phase Distro (for shore power) with 50Amp straight blade connector.

## **Stage Right**

One (1) 400 Amp 3 Phase Distro with all female tails.  
One (1) 200 Amp 3-Phase Distro.

# DRESSING ROOMS

Dressing Rooms are located directly offstage right. The Green Room is located at stage level.

## **Principal Dressing Room:**

One principal dressing room is located on the second level and can comfortably accommodate one guest.

## **Chorus Dressing Rooms:**

Two chorus dressing rooms are located on levels 3 and 4. Level 3 chorus room can comfortably accommodate eight guests while Level 4 chorus room can comfortably accommodate four.

## **Dressing Room Amenities:**

All Dressing rooms include lighted makeup mirrors and a restroom.  
The laundry room on the first floor and the #1 Chorus Dressing room also includes showers.

The dressing rooms are specifically designed for theatre. They are not furnished with comfortable couches or chairs. There is a fridge/freezer, dishwasher and sink in the green room with coffee/tea service.

# MERCHANDISE LOCATION

Merchandise is located upstairs in the Gallery off of the balcony and merch load-in does involve going up a flight of stairs. Unfortunately, there is no elevator or lift to access this area but we will have stagehands to assist with lugging gear in and out.

## **WiFi for Merch Area**

Network: Bijou Gallery & Password: lamarhouse2012

# SOUND SYSTEM: IMPORTANT NOTES

**Due to the potential volume levels available with our FOH system that may come into the building with a show, the Bijou has a very strict policy regarding SPL.**

The following maximum db level restrictions have been set for the protection of our audience members, crew, and artists. At no time shall the maximum A-weighted SPL ever reach above 110db at the Center of the House (COH) in Row "F." The Bijou Theatre reserves the right to direct their System Engineer to reduce system levels to remain within acceptable SPLs.

## **A-weight SPL @ COH Maximum Time**

95db 4 hours  
98db 2 hours  
102db 1 hour  
110db 30 minutes

For questions and concerns that you may have regarding the Bijou Theatre's sound system, please contact:  
**William Tugwell, Assistant Tech. Director**  
**[william@knoxbijou.org](mailto:william@knoxbijou.org)**  
**(865) 522-0832 EXT. 203**



# SOUND SYSTEM: FRONT OF HOUSE SYSTEM

**\*Mixing Console is located under the First Balcony.\***

## **House Mixing Console**

Yamaha CL5

## **Speakers**

12 JBL VT4887 Line Array Speakers (Stacks are not flown)  
Powered by Lab Gruppen 6400's

## **Sub Range Speakers**

4 EAW SB625 Dual 15"  
Powered by Lab Gruppen 6400's

2 EAW front fill speakers  
Powered by QSC 703's

## **(Single point inserts only)**

FOH sound system details

**\*If your group requires excessive low end,  
please make arrangements to rent additional subs.\***

Subs and front fills are on a separate EQ.

The Bijou has a snake run from the FOH position to SR.  
You will need approximately 150+ feet of snake to make this run. PA ties are located  
either at FOH or on stage right.

# STAGE MONITOR SYSTEM

**\*Mixing Console is located Down Stage Right\***

## **Monitor Console**

Yamaha QL5

## **Passive Wedges**

(10) Eastern Acoustics Works SM129Z

QSC Power

(10) Monitor Mixes available

# SOUND SYSTEM: MICROPHONE INVENTORY

Qty	Brand	Model	Notes
7	Shure	SM57	Instrument
8	Shure	SM58	Vocal
5	Shure	SM81	Small Diaphragm Condenser
1	Shure	SM91	PZM
3	Shure	Beta 98	Instrument
2	Shure	Beta 52A	Kick Drum
1	sE	V7	Supercardioid
1	Telefunken	M80	Supercardioid
1	Sennheiser	XS1	Vocal with On/Off Switch
3	Sennheiser	e604	Drum
1	Shure	PG 81	Instrument Condenser
3	Sennheiser	e835	Wireless Handheld (*Up to four RF receivers available - Sennheiser G3/G4)
3	Sennheiser	EW100 GA-ME2	Lavalier (*Up to four RF receivers available - Sennheiser G3/G4)
2	AKG	C3000	Large Diaphragm Condenser
1	Audix	D6	Kick Drum
2	Audix	D2	Drum

# SOUND SYSTEM: MICROPHONE INVENTORY CONT.

Qty	Brand	Model	Notes
1	Audix	D4	Drum
1	Audix	i5	Snare
4	Horizon Audio sub snake 12 ch no return	N/A	50'
2	Horizon Audio sub snake 6 ch no return	N/A	50'
2	Sennheiser	ME 4	Clip On Lavalier
1	Sennheiser	HSP - 4	Headset (Beige)
3	Whirlwind	IMP-2	D.I. Box
2	Radial	J48	Active D.I. Box
1	Radial	AV2	Multi Media D.I. Box
3	Radial	Pro	Passive D.I. Box
1	Behringer	Ultra	Active D.I. Box
*	XLR	Misc.	8', 10', 25', 30', 50' lengths
*	Mic Stands	Misc.	Short, Tall, Boom & Straight Supported by either round or tripod bases



### **Bijou Theatre Fun Fact:**

The Bijou Theatre, a pillar in Knoxville's rich history, began as The Lamar House more than two centuries ago. Sitting on a parcel once granted to Revolutionary War general James White, it is believed to be the oldest commercially active property in Knoxville — possibly in Tennessee.



# LIGHTING SYSTEM: LIGHTING INSTRUMENTS

**\*Console is located under the First Balcony.\***

## Console:

Avolite Titan Mobile with wing

## Dimmers:

103 - 2.4kW Strand CD-80's

2 dimmers are designated for house lights, 56 soft on stage,

10 dimmers US wall floor, 10 dimmers in boxes - 5 per side, 20 dimmers FOH Balcony rail

All lighting requests must be advanced prior to event. For requests or questions, please contact:

**Serenity Shalander, Technical Director**

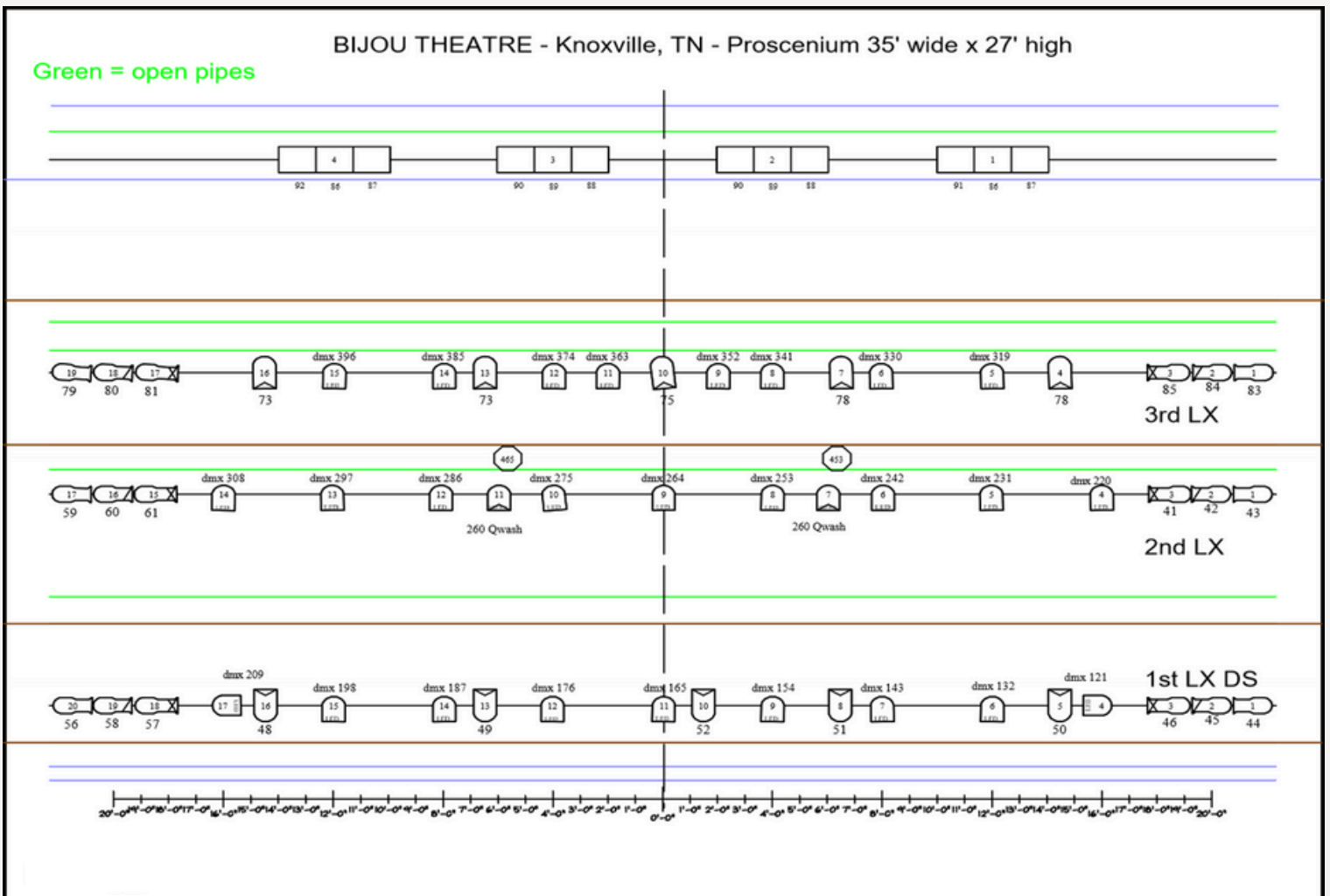
**Serenity@KnoxBijou.org**

**(865) 522-0832 EXT. 203**

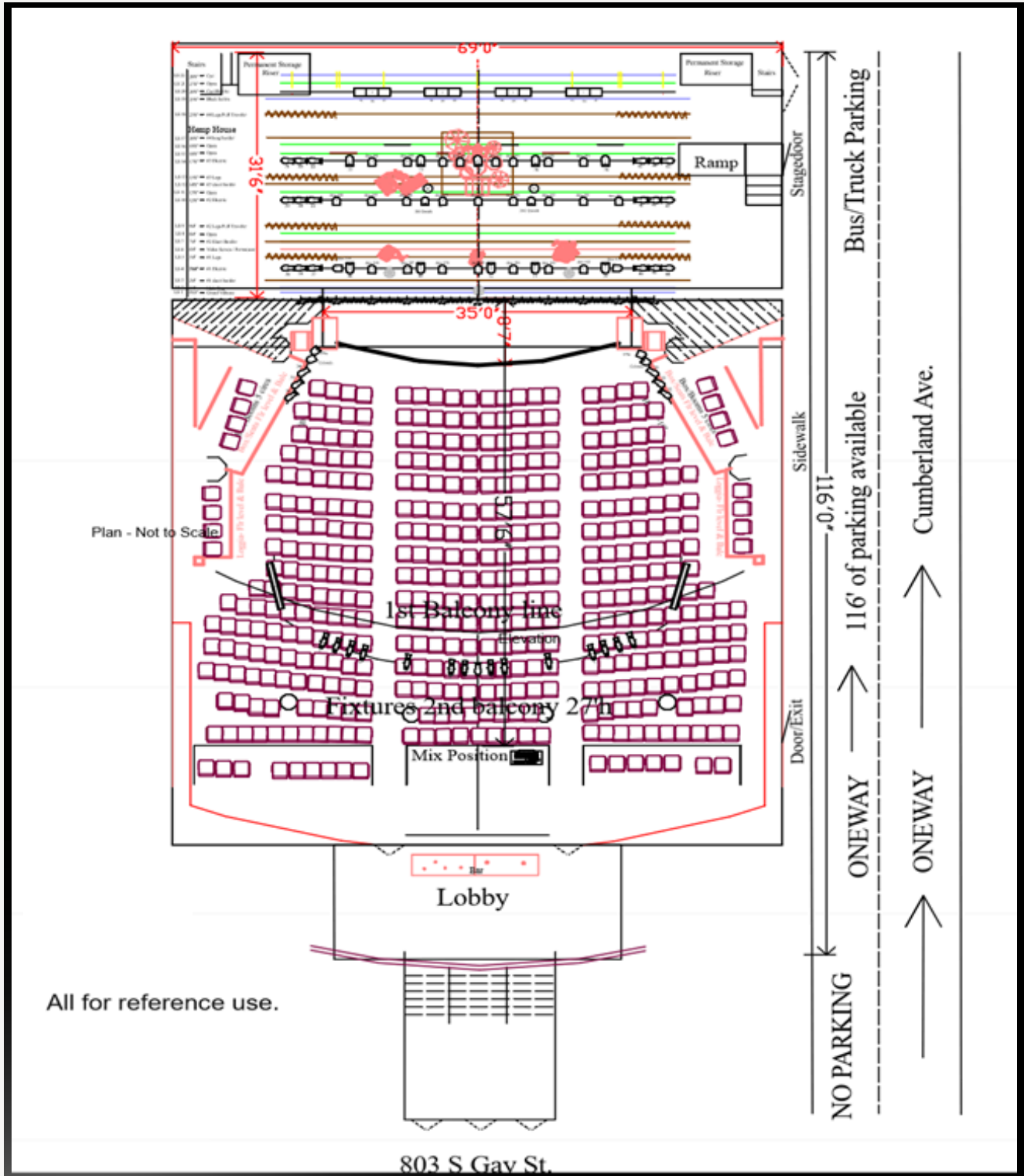
## BASIC HOUSE PLOT

### \*\*NOTE\*\*

Please verify in advance, plot is subject to change.



# LIGHTING SYSTEM: MICRO PLOT



## Bijou Theatre Fun Fact:

The Bijou Theatre has served many roles in its storied history - hotel, Civil War hospital, a brothel, a fruit stand, and more. As such, it has also been named as one of the most haunted buildings in the state of Tennessee. Many touring groups have consistently reported seeing a man watching performances in the closed, abandoned balcony. Let us know if your team wants a private ghost tour at the conclusion of your show!



# LIGHTING SYSTEM: LIGHTING INVENTORY

QTY	Instrument	Lamp	Quality*	Notes
10	Source 4 - 14°	750W HPL	1	Located in the 2nd Balcony
4	Source 4 - 19°	750W HPL	1	Located in the 2nd Balcony
32	Colorado 1 Tour	LED	2	26 hung on stage/1 in each box & 4 unhung
2	Chauvet 260 Q wash	LED	1	2nd LX
2	Chauvet 375z Intimidator	LED	1	1 in each box HL/HR
2	Chauvet Slimpar Hex 3 irc	LED	1	1 HL & 1 HR Prosc. decor
6	Strand 6x16	575W FLK	3	Current Lamps vary from 575-1000W
6	Strand 6x12	575W FLK	3	Current Lamps vary from 575-1000W
6	Strand 6x9	575W FLK	3	Current Lamps vary from 575-1000W
2	Altman 6x16	575W FLK	3	Current Lamps vary from 575-1000W
2	Altman 6x9	575W FLK	3	Current Lamps vary from 575-1000W
5	8" Fresnels	1kW BVW	2	Strand
5	6" Fresnels	750W BTN	2	Strand
10	PAR 64	1kW FFS	2	WFL
6	Far Cyscs, 3-Ckt.	1kW FFT	2	Strand Three-Cell Units
6	Ground Cyscs	1kW FCM	2	Strand Single-Cell Units
5	Striplights, 3-Ckt.	120W R40's	2	Stand Three-Circuit, 6' Striplights
2	Lycian Superstar 1.2		2	Located in the 2nd Balcony

**\*Quality Ratings: 1) New; 2) Good Condition; 3) Poor Condition**

# GRID IRON & RIGGING INFO

**\*ALL RIGGING MUST BE OVERSEEN BY THE TECHNICAL DIRECTOR.\***

The Grid has a **MAXIMUM** Total Load of **20,000#** on an uniformly distributed load.

**600#**

If hung from 1 Grid Irons (2x10 joist)

**1300#**

If hung from 2 Grid Irons (2x10 joist)

**2500#**

If hung from 4 Grid Irons (2x10 joist)

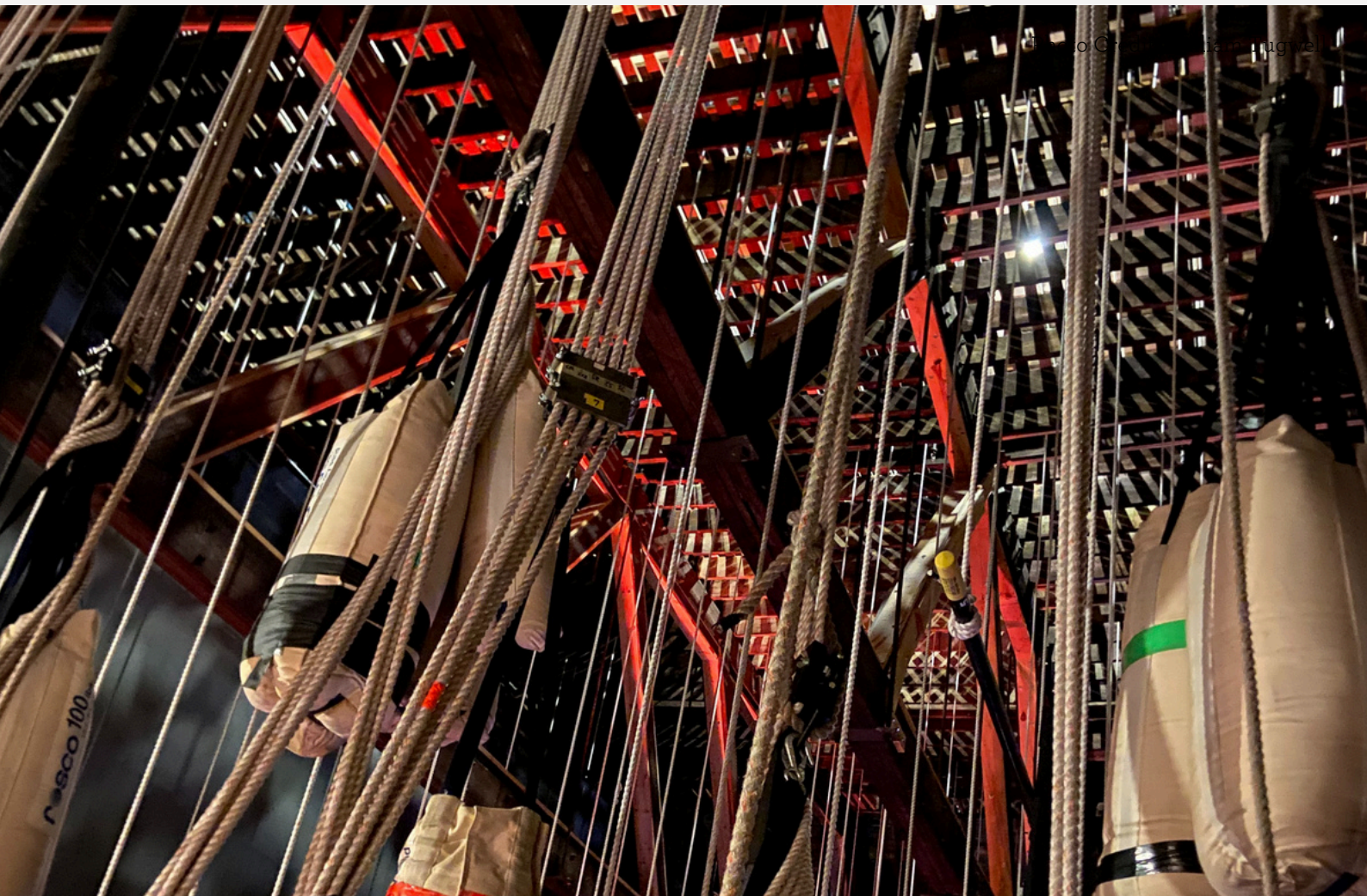
---OR---

**600#**

On each Hemp set

**Main drape can either guillotine or travel. Operated from DSR.**

The Bijou has 21 hemp line-sets that are 44'-8" long. All hemp line-sets are operated from the pin rail located on the SR fly gallery. Please note that the gallery can carry a **maximum** load of **18,000#** on a uniformly distributed load. This is 2,000# less than the grid can support. The House curtain, LS 1 is on a steel counterweight line set operated on the deck SR. The House plot has 5 open line-sets and 4 line-sets designated for Electrics.



# GRID IRON & RIGGING INFO: HEMP SET SCHEDULE

Line #	Dist. US	Current Hang
1	0'-9"	Grand Valance
2	1'-4"	House Curtain/Main Rag
3	2'-4"	#1 Short Border
4	3'-10"	1st Electric
5	5'-4"	#1 Black Legs
6-14'x33'	6'-4"	Video Screen-front p/ **Permanent
7	7'-4"	Open
8	8'-4"	#2 Short Border
9	9'-4"	#2 Legs or Full Black (Traveler)
10	12'-8"	2nd Electric
11	13'-8"	Open
12	14'-8"	#3 Short Border
13	15'-8"	#3 Black Legs
14	17'-8"	3rd Electric
15	18'-8"	Open
16	19'-8"	Open
17	20'-8"	#4 Tall Border 15'h

Line #	Dist. US	Current Hang
18	23'-8"	#4 Legs or Full Black (Traveler)
19	25'-8"	Black Scrim
20	26'-8"	#4 Electric Cyc Lights
21	27'-8"	Open
22	28'-8"	Cyclorama (White)



# PROJECTION

- (1) Panasonic – PT-DW830UK with standard long throw lens. 8.5K lumens (front shoot only)
- (1) 14'h x 33'w front shoot only video screen. ((Located permanently on LS6.))
- (1) 9'h x 16'w front shoot only video screen. ((Location can be adjusted.))

## **Note:**

Our projector is not a permanent fixture in our theatre and will require set up at FOH. To fly the screen, a flyman may be needed. Both projector and screen have a daily rental fee of \$250. Cost TBD if needed for more than one day.

**If you are needing to use the projector for your production, please mention this to us during the advance.**

# RISERS

- (6) 4' x 8' Wenger Stage Tek decks
  - (8) 24" legs
  - (8) 12" legs
  - (16) 12" wheeled legs

# HAZE

Please discuss with TD before using haze as we will need to disable detectors. The green room door will have to be closed as well. We also cannot allow too much haze to collect in the audience as this will shut off the HVAC system. The house hazer has a daily rate of \$50. Weekly rate is \$150.

# WI-FI INFO

We have three different Wi-Fi networks for various areas of the venue, info for all is as follows:

## **Green Room / Backstage**

Network: Bijou Artist  
Password: backstage

## **FOH**

Network: Bijou FOH  
Password: lamarhouse2012

## **Merch Area**

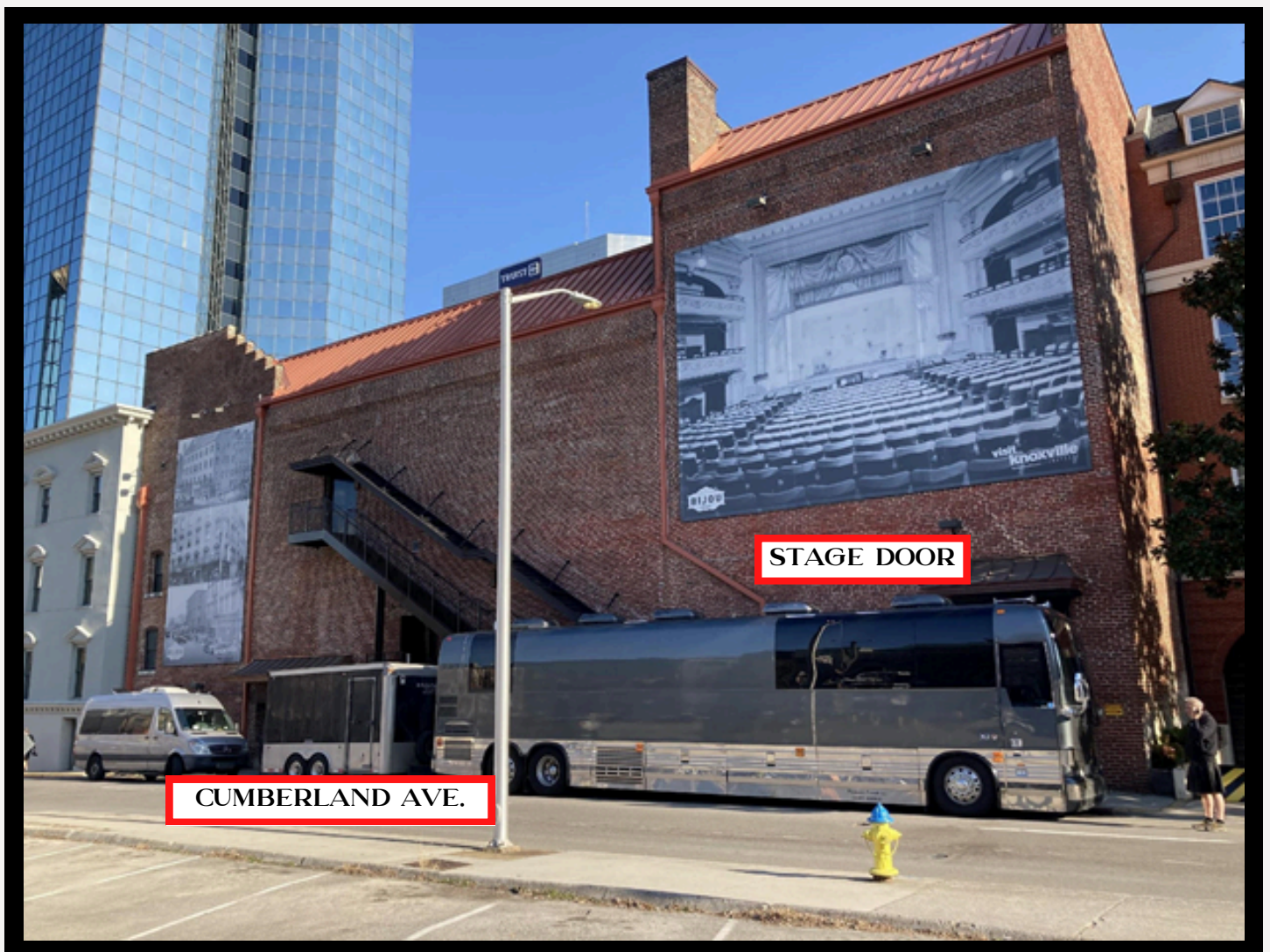
Network: Bijou Gallery  
Password: lamarhouse2012

# PARKING & SHORE POWER

Parking for tour vehicles is located on Cumberland Ave. next to the Bijou Theatre. We have 116' available for parking. It is imperative that vehicles do not cross the yellow caution paint (this signifies the Federal Building's parking). Due to limitations of parking space, please advance all arrangements prior to your arrival. Please inform the Technical Director Serenity Shalander at (865) 522-0832 x 203 of all arrival and departure times.

**If you fail to advance arrival times or arrive earlier than scheduled, you may be ticketed by the city of Knoxville.**

Shore Power is also available; we have One (1) 200 Amp 3 Phase Distro with straight blade 50amp 15/250v female plug in. Shore power code is 803. In the event that you cannot tie into our shore power you may run generators throughout your stay.



# HOTEL RECOMMENDATIONS

## HYATT PLACE KNOXVILLE DOWNTOWN

Address: 530 S Gay St, Knoxville, TN 37902

Phone: (865) 544-9977

## HILTON KNOXVILLE

Address: 501 W Church Ave, Knoxville, TN 37902

Phone: (865) 523-2300

## EMBASSY SUITES BY HILTON KNOXVILLE DOWNTOWN

Address: 507 S Gay St, Knoxville, TN 37902

Phone: (865) 544-8502

## HAMPTON INN & SUITES KNOXVILLE DOWNTOWN

Address: 618 W Main St, Knoxville, TN 37902

Phone: (865) 522-5400

## THE TENNESSEAN PERSONAL LUXURY HOTEL

Address: 531 Henley St, Knoxville, TN 37902

Phone: (865) 232-1800

## CROWNE PLAZA HOTEL KNOXVILLE DOWNTOWN UNIVERSITY, AN IHG HOTEL

Address: 401 W Summit Hill Dr SW, Knoxville, TN 37902

Phone: (865) 522-2600

## COOK LOFT

Address: 722 S Gay St, Knoxville, TN 37902

Phone: (865) 310-2216

## THE OLIVER HOTEL KNOXVILLE

Address: 407 Union Ave, Knoxville, TN 37902

Phone: (865) 521-0050

**To Redeem Bijou Rate, Use Code THTR at Checkout**

